



Government of Samoa

Ministry of Health

Private Mail Bag, Motootua
Tel: (685) 68100
or 68107
Facsimile: (685) 26.553

Please address
all correspondence
to the Chief Executive Officer

Terms of Reference (ToR) for Preparation of Detailed Design and Build Documentation for the Construction of the New MTII Hospital Kitchen Building at the Tuasivi, Savaii

A. Background

The Government of Samoa through the Ministry of Health has available funds to design and construction of a new MTII Kitchen at Tuasivi Savaii. The infrastructure will support the 24/7 nutritional needs of all the inpatients in taking medication which is very important for the health and wellbeing of our country. As a recent concept which is popularized among the hospital, is that food is medicine and it is part of the health care and will encompasses functions like advocacy, mediation, enabling and empowerment for good health and quality health services.

The emphasis will be focused strongly on health promotion and primordial prevention, primary, secondary and tertiary levels of health care which are the core deliverables of clinical services that will contribute to achieving an inclusive sector approach to health in Samoa. For a better outcome of patient results which includes safety of the patient, the construction of a new Kitchen in MTII Hospital at Tuasivi Savaii plays very important roles which cater to the people wellness and treatment of the various diseases. This is in line with governance and guidance of the health, healthcare and health industry of Samoa which has a mandated role in monitoring and regulating food mainly by the Food and Drugs Act 1967, and the Health Ordinance 1959.

Therefore, this project will strengthen the overarching health objective to improve access to, and utilization of effective, efficient and quality health services to improve the health status of Samoa's population in line with the Health Sector Plan vision of, "A Healthy Samoa".

B. Objective of the Assignment

The objective of this assignment is to provide adequate staff working space and catering/preparing facility to cater for all inpatients of MTII Hospital at Tuasivi Savaii. Given the nature of the assignment, the professional services of a qualified architect is to carry out the simple design of the MTII Kitchen, administer and conduct the civil works contract, ensure the building design is constructed in accordance with the provision of the contracts and design provided.

C. Scope of Work :

The contract will look into the Design and Construction of the MTII Hospital in the compound of Tuasivi Savaii.

The consultant(s) is expected to carry out the following scope of works;

D. Site Investigation

- Survey the location, inspect soil and ground conditions to enable the engineer to conduct foundation design. Provide report on soil and ground conditions with recommendations of foundation type to be considered for the proposed facility.
- Undertake topographical survey and submit report or topographical survey plan to the Ministry of Health (MOH)
- Inspect on site and identify on the topographical survey or site plan the locations of any existing underground services

E. Design Stage

- Liaise with all the relevant stakeholders to determine the full scope and requirements of the proposed MTII Kitchen including the fitting, furniture and equipment (FFE). Ensure compliance with MOH Health Care Waste Management Plan 2020-2025 and Disaster Risk Management Plan 2017.
- **Prepare Preliminary Design and report including recommendations on suitable materials, construction systems and services (electrical, mechanical, plumbing and drainage) for MOH's review and approval.**
- Liaise with the Electrical Power Corporation (EPC) to determine the requirements, specification and recommended supplier of a standby generator.
- Develop Final Design, Construction drawings (architectural, structural, electrical, plumbing, mechanical including air conditioning, fire), Specification and Priced Activity Schedule for MOH approval based on the approved Preliminary Design and report. All design documentation including specification and intellectual property pertaining to this project shall remain the property of MOH.
- Prepare a budget estimate using the Priced Activity Schedule template for the project based on the Construction drawings and Specification and submit to MOH for approval
- In consultation with the relevant authorities, submit all the required documentation with the applications for Development Consent and Building Permit.
- Provide three (3) sets of Construction drawings and Specification in hard copy and an e-copy.

F. Construction Stage

- Provide a Construction plan or program in the form of a Gantt Chart including mobilization, establishment on site, delivery of materials and equipment.
- Ensure a Health and Safety Plan and Environmental Management Plan are in place and provide a copy of these plans to MOH.
- Construct the building in accordance with the approved drawings and documentation (issued with the building permit) from the Ministry of Works, Transport and Infrastructure (MWTI).
- Prepare monthly progress reports, or as requested; for discussion in project meetings with MOH.
- Recommend any appropriate action to suppliers and manufacturers of construction supplies/materials when necessary, to facilitate timely completion of the project.
- Supply, install and commissioning of a standby generator complete with the required cables and connections to the new building. Specify and construct a bund wall around the generator.
- Notify MOH and obtain approval of any variation before undertaking it.

- Ensure timely delivery of as-built drawings (should there be changes to the original drawings), operation and maintenance manuals to MOH.
- Coordinate the completion of defects during the Defects Liability Period.
- Submit operational and maintenance manuals to MOH.

G. Scheduling:

- The design phase must be completed in 2 months from contract award. The estimated duration of the construction phase is 5 months plus the defects liability period of 12 months.

H. Proposed Project Personnel:

Team Member/Personnel	Qualification	Minimum years of specific experience
Project Manager/Team Leader	Degree in civil/structural engineering or related discipline. Must be a registered CPEng with IPES	5
Architect	Degree in architecture or similar discipline with experience in designing of public health facilities	5
Land surveyor	Degree in land surveying. Must be registered with MNRE	5
Electrical Engineer	Degree in electrical engineering. Electrical Engineer who will be designing the electrical services must be a Chartered Professional Engineer (CPEng), registered with IPES.	5
Electrician	Must be Grade A licensed with EPC	5
Fire Engineer	Degree in fire engineering or similar discipline	5
Mechanical Engineer	Degree in mechanical engineering or similar discipline	5
Quantity Surveyor	Degree in quantity surveying	5

I. Institutional Arrangements :

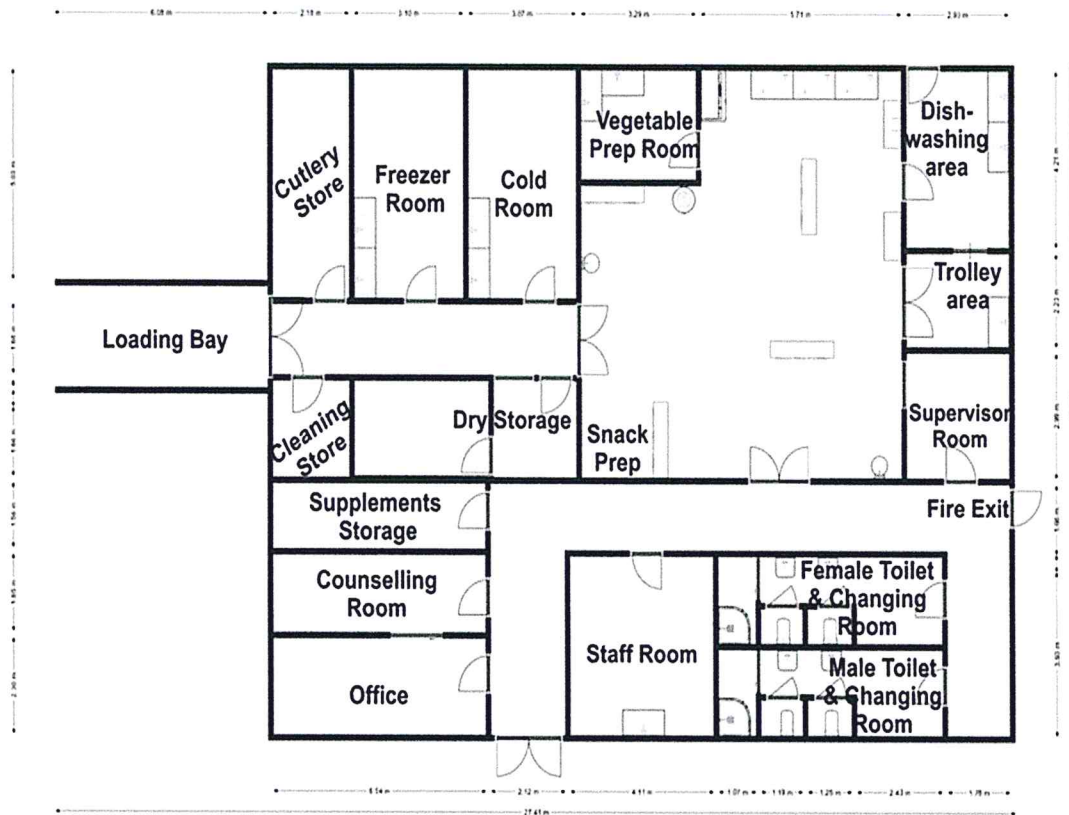
- The architect and construction compact will report directly to the Director General of Health through the DDG (Hospital and Clinical).. It is also to work closely with the ACEOs, Asset

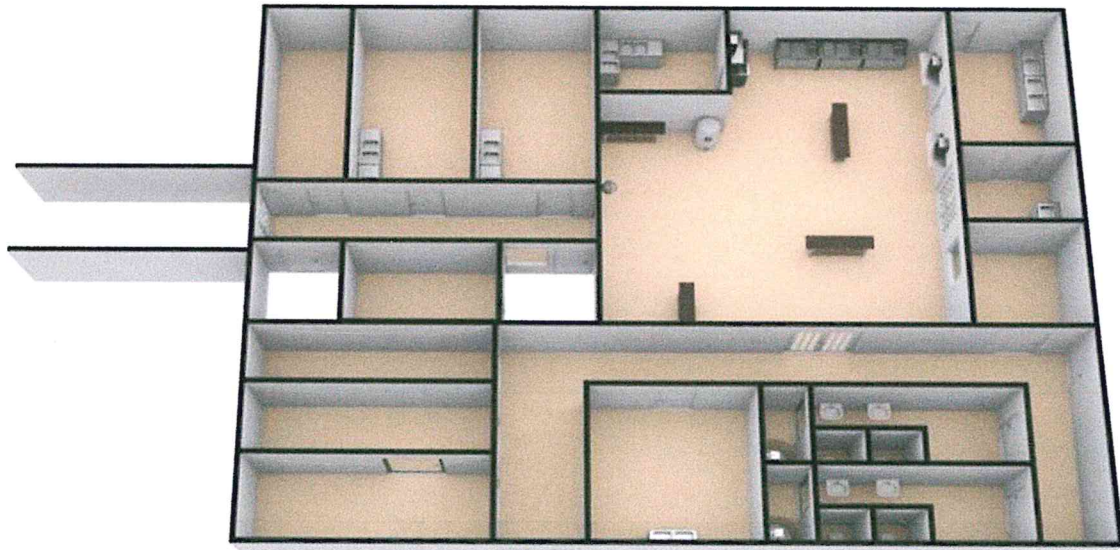
Management & Support Services Division, Finance & Procurement Division and the Health Sector Coordination, Resourcing & Monitoring (HSCRM) Division.

- The firm must have the Government of Samoa's (through Ministry of Health) interest as priority.

J. Floor Plan of MTII Kitchen, Tuasivi Savaii :

The floor plan of the new kitchen is included herein indicating the dimensions and functionalities of the building; which will determine the services to be provided.





Free SD export
floorplanner

Male fa'aaloalo lava,

Leausa Tupa'i Samau Toleafoa Dr Take Naseri
Director General/CEO
Ministry Of Health